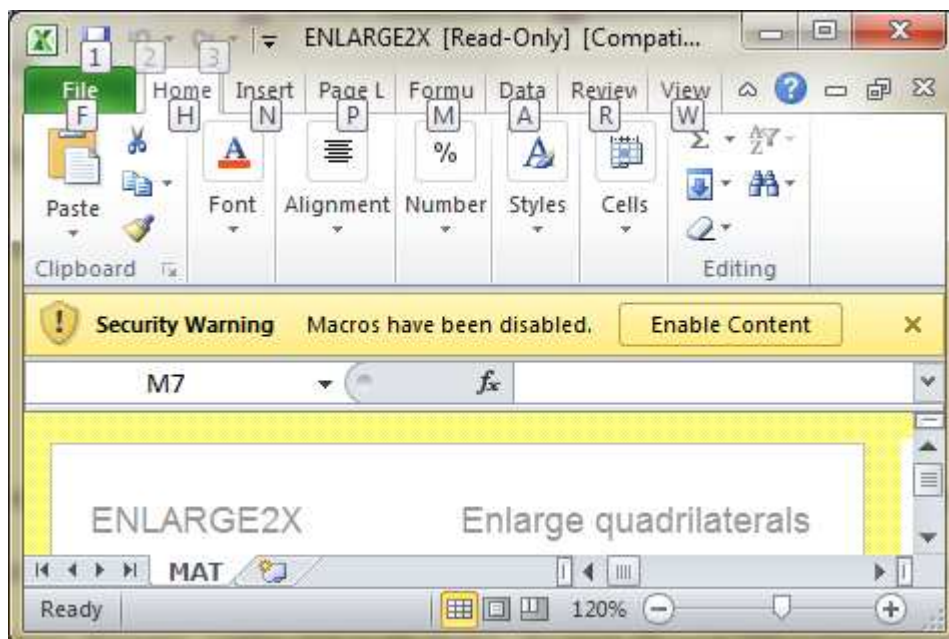


Enabling Macros in Office 2010

If the software has not been set up to regard the material as a Trusted Source or you are running this from a CD ROM click **Yes** when the pop up below appears.



After selecting an application with a Macro a **yellow** warning message appears below the toolbars. Click **Enable Content** to allow the macros to function.



If installed on a network or hard drive then set the folder LWSALL as a **Trusted Location**.